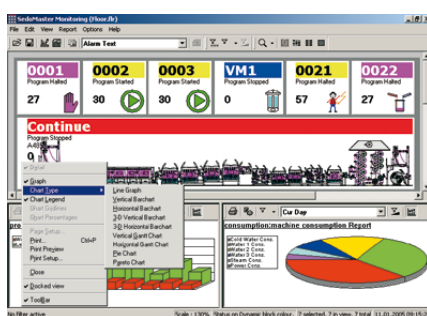


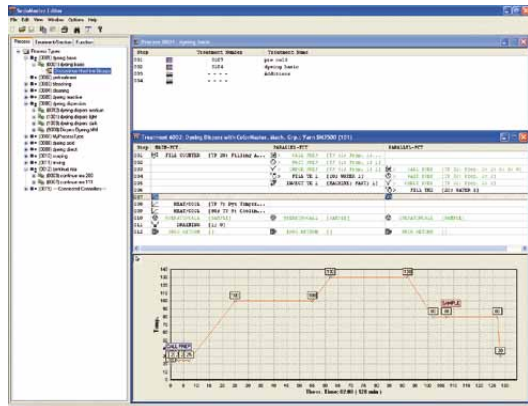
A strategic solution for the textile finishing industry



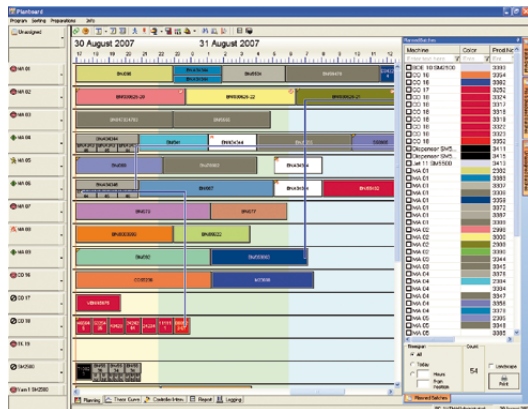
SedoMaster is a Windows based solution, designed to manage the dye house or an entire textile finishing plant. SedoMaster provides everyone, from the operator to the chief executive with an integrated solution, allowing them to manage recipes, processes and reports. SedoMaster supports all required interfaces to other systems such as chemical dispensing, recipe management and ERP. The result is optimization of all machinery (dyeing, washing, bleaching, stenter, dryer, calander, etc.), minimizing the cost.

SedoMaster is a modular package that can be implemented in stages as and when required.

Controls your production



Creation of processes



Graphic Planboard



Scale and wireless scanner for weighing station

The system is available as basic, advanced and expert package. On top of that, several options are available. Detailed user-rights enable an optimal adaptation to customer needs.

Basic system:

Production processes (programs, settings, etc.), are created and downloaded with the **Graphical process editor** to the machine controllers enabling central management of production processes for each machine. This module is based on the familiar “Windows Explorer” concept, so reducing the need for training.

The graphic interactive **Planboard** schedules batches to the selected machine. Based on production, calendar and shift times, it calculates the most probable start and end date of each batch and optimizes the production sequence. The batches, together with their corresponding process can be downloaded to the machines and the Planboard automatically updates according to the actual production status of the running batches, showing the actual status (run/stop, alarms) using different color codes.

Advanced system

The data logger of the **Management reporting module** records all events (e.g. start, stop, parameter change, alarm, operator intervention, etc.) and process values (temperatures, speed, differential pressure, pH, residual moisture, etc.) for each batch.

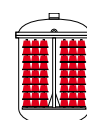
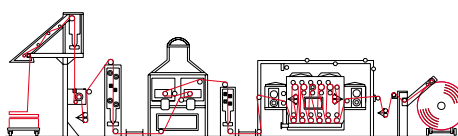
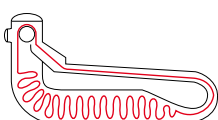
The flexible report generator enables users to create reports and formulas. Reports by shift, day, week, month, machine, batch, color, article, customer or recipe can be requested. All recorded values including times (sampling, loading, run, stop, alarms, etc.), consumption (water, steam, chemicals, dyestuffs, etc.) and costs can be included in the user defined reports in tabular or graphical format.

The **Process Control Diagram** is a powerful tool to analyze historical data for problems which may have occurred in earlier batches. All events can be viewed including alarms and user intervention.

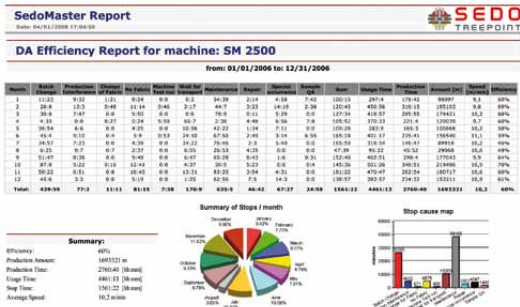
Controller intervention is directly possible from the system. Processes can be started, halted, or stopped; function or parameter changes are also supported. The actual status (actual function, temperature, speed) of all machines is constantly updated and displayed.

Expert system

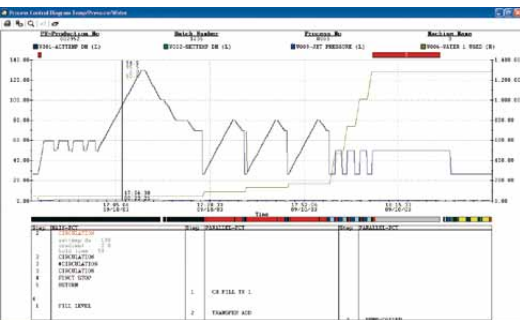
Link with recipe management system: SedoMaster can be linked to the ColorMaster color matching and recipe management system and to other popular recipe systems. Batches are entered in SedoMaster and automatically transferred to the recipe system which calculates the corresponding production recipe (dyestuffs and chemicals) and transfers it back to SedoMaster.



Informs you about the costs



Data acquisition report



Process control diagram



Chemical dispensing station

The recipe can then be shown on the weighing station or sent to an automatic dispensing station. In addition, the recipe system can optimize the production process (temperature, speed, gradient etc.) corresponding to the batch data and the calculated recipe. SedoMaster uses this information to create an optimized (cost and quality) production process that is downloaded to the machine controller.

Link ERP system: In many cases, batch information is already available on the plant Host computer. This data can be transferred to SedoMaster so avoiding re-entry of the same data. When the batches are finished, all registered data such as times, consumption, costs, etc. can be transferred back to the Host computer for lot tracking or calculation purposes.

Planning with routing support: In combination with an interface to an ERP system, the data for the production planning including their routings will be displayed graphically in the Planboard module.

Order processing: Orders, coming from the ERP-system can be combined to one batch or splitted into several batches.

Data acquisition: The system can also be used to acquire machine data (e.g. machine or operator log-in/log-off, declared stops) that can be analyzed with the included flexible data acquisition reports.

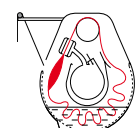
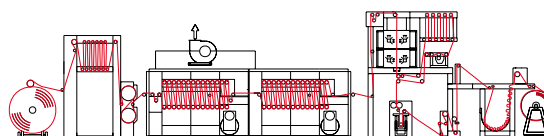
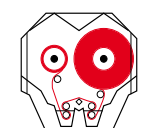
Optimization on preparations for continuous applications: By monitoring the consumptions and calculating the residual liquor SedoMaster optimizes the preparations for continuous applications.

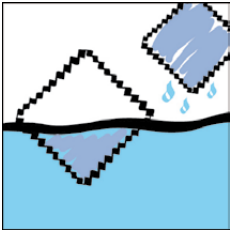
Options:

Weighing station for dyestuff and chemicals: The production recipe is shown on the PC at the weighing station. The user can then weigh the correct products within the defined tolerances. Barcode labels can also be used to minimize the risk of human error. All weighings are registered to the batch, and automatically updated in the products inventory.

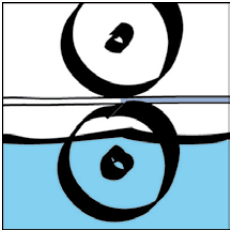
Link to dispensing/dissolving station: Automatic dispensing stations for chemicals and dyestuffs are becoming very popular in dye houses and finishing plants, as they reduce cost and increase the reproducibility. SedoMaster can link to the different subsystems (machines, recipe system, dispensing system) in the plant. The machine controllers will trigger when a dispense is required and the recipe system will have calculated the production recipe. SedoMaster centralizes this information and passes the correct products to the dispensing station when they are required.

Products inventory: When batches are planned, the required quantities of chemicals and dyestuffs are reserved and checked in the inventory. After the weighing or dispensing is finished, the reservations are cancelled and all registered product consumptions are updated in the inventory and stored against the corresponding batch. Minimal inventory levels and consumption reports by day, week and month are also available.





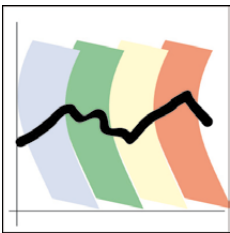
Batch dyeing machines



Finishing machines



Link host



Link recipe system



Link dispensing



Weighing station



Inventory dyestuff+chemicals

Head office:
Sedo Treepoint GmbH, Germany
Neuwies 1, D-35794 Mengerskirchen
Phone: + 49 6476 31-0, Fax: +49 6476 31-31
sedo@sedo-treepoint.com

Sedo Treepoint, Switzerland
Phone: + 41 43 488 11 88, Fax: +41 43 488 11 89
switzerland@sedo-treepoint.com

Sedo Treepoint, Belgium
belgium@sedo-treepoint.com

Sedo Treepoint, China
china@sedo-treepoint.com

Sedo Treepoint, India
india@sedo-treepoint.com

Sedo Treepoint, Italy
italy@sedo-treepoint.com

Sedo Treepoint, Singapore
singapore@sedo-treepoint.com

Sedo Treepoint, USA
usa@sedo-treepoint.com

Technical specifications are subject to change without prior notice.